

Getting to the Lotzorai and Arbatax area

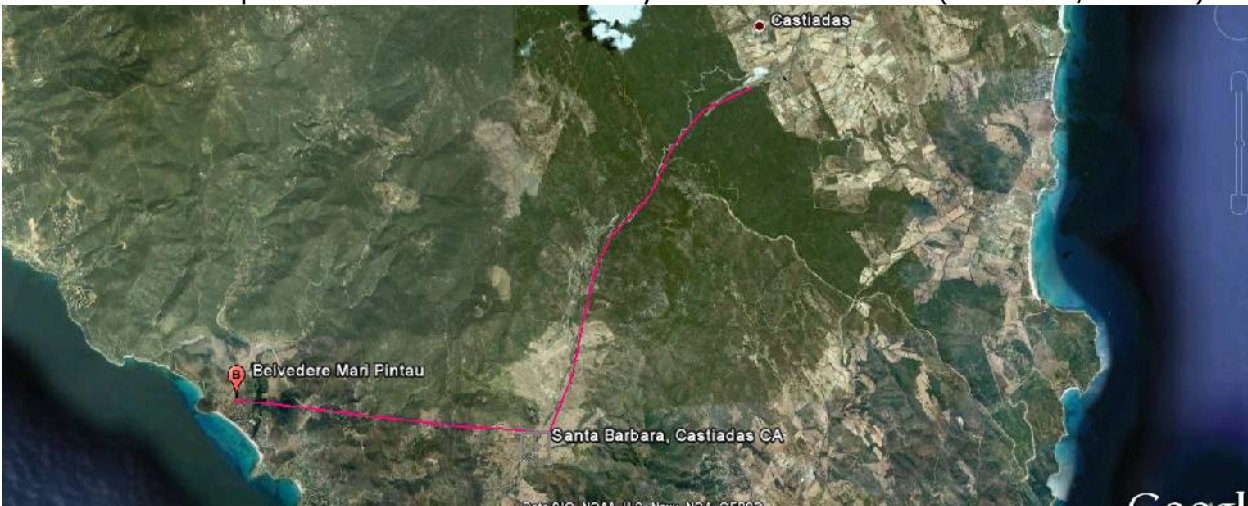
If necessary, phone Anne +39 0782 669507 or mobile +39 339 714 6496 or Peter +39 335 648 9826.

Driving in Italy. Note you should have on the headlights even in daytime on the SS roads. You must carry a 'documento' (passport or driving license with photo) at all times.

Note also that road signs can be misleading. A left arrow on the RIGHT side of the road often means go straight ahead (not always, but usually). A left arrow on the left side of the road means turn left.

Arrival From Cagliari

Leave Cagliari on the main road to Quartu S Elena and Villasimius and drive along the coast road Turn right at the roundabout then first left (unsigned road) which will take you along the coast road as far as Mari Pintau, just after Cala Regina. In May 2010 another section of the new SS125 was opened which from here takes you to Santa Barbara (Castiadas/Solanas).



Just head north on the SS125. After Muravera, the road has sections of new and sections of old road but it is all the SS125. **Just follow signs for Tortolì.**

Arrival from Isili, Arbus

DO NOT follow your car's GPS or Googlemaps indications along the SS198 through Seui and Ussassai or it will take 5 hours from Arbus and 3,5 from Isili. Instead go to Escalaplano, the Perdasdefogu, and follow signs to Tertenia to descend to the SS125 on the coastal plain and join it south of Tertenia. Then as for "Arrival fro Cagliari" . It takes 2,5 hours from Isili to The Lemon House.

Arrival from Olbia

Fastest: Leave Olbia on the main road to Cagliari and Nuoro – '4 corsie' or dual carriageway, the SS131 dir. Go as far as Nuoro and stay on the road towards Cagliari until you see a sign for Lanusei, the SS389. Follow the signs for Lanusei through the Gennargentu mountains on the SS 389 past Villanova then slow down until you see a sign for Villagrande on the left. Go to Villagrande and as you approach the village, you will see the sign to turn right for Tortolì. Follow this road down to the outskirts of Tortolì. About 2 hours

Most beautiful but much slower: Leave Olbia on the SS125 to San Teodoro and just drive the whole way down the coast on the same road. This takes 3-4 hours but it is a beautiful drive. Once through Baunei, stop at the garage on the left and look over the entire area of Ogliastra. Truly fantastic sight. Continue down to the valley floor towards Tortolì and you will come into Lotzorai before you get there.

Arrival from Alghero

From Alghero airport follow signs East for Sassari – N291, after the first 10km or so it's a dual carriageway. 25km or so from Alghero airport turn R (south) on SS131 following signs for Cagliari and Macomer. Go S for 70km to Macomer; at this point you see signs for Nuoro and turn L (east) towards Nuoro, SS129. After 35km on SS129 you join SS 131 DCN (follow the sign for Nuoro e SUPERSTRADA) and continue NORTHEAST, away from Cagliari, for only 10km to arrive on the outskirts of Nuoro – slow down as the sign is late. Turn R on SS389 (sign for 'Nuoro ospedale' and Tortolì then Lotzorai, Lanusei, Arbatax and/or Mamoiada). Follow this straight, fast road southeast to pass Villanova Strisaili, SLOW DOWN and then when you see the Esso garage on the Right as the road starts to go slightly uphill, turn L following signs for VILLAGRANDE. The road climbs up and then descends (windy) through woods to Villagrande, on N edge of Villagrande you'll see the plain of Ogliastra below you and follow signs on the windy road for Tortolì.

To get to The Lemon House, Via Dante 19, 08040 Lotzorai

Lotzorai is on the SS125 about 5 k north of Tortoli and our house is on the northern side of the village. Follow the instructions above but when you get to Tortolì, follow signs for Lotzorai or Olbia. If you are coming from Villagrande or Cagliari, you are driving north when you get to Lotzorai, so continue north through the village and note where the road narrows and takes an s-bend, there is a Post Office (marked yellow PT) on the right and then a junction with two roads joining from the right. One of these is via Dante but it is one-way so continue on the main another 50m until you come to Ugo Loi Sports shop Turn right immediately after it. (If you are coming from Baunei on the SS125, this is the first on your left as you come into the village.) Go slowly - road is very narrow and kids will run free on it. After about 20m, you should be able to see the side of our house – big green/lemon one at the end of the road. Turn sharp right into via Dante and park. Walk back to no 19.

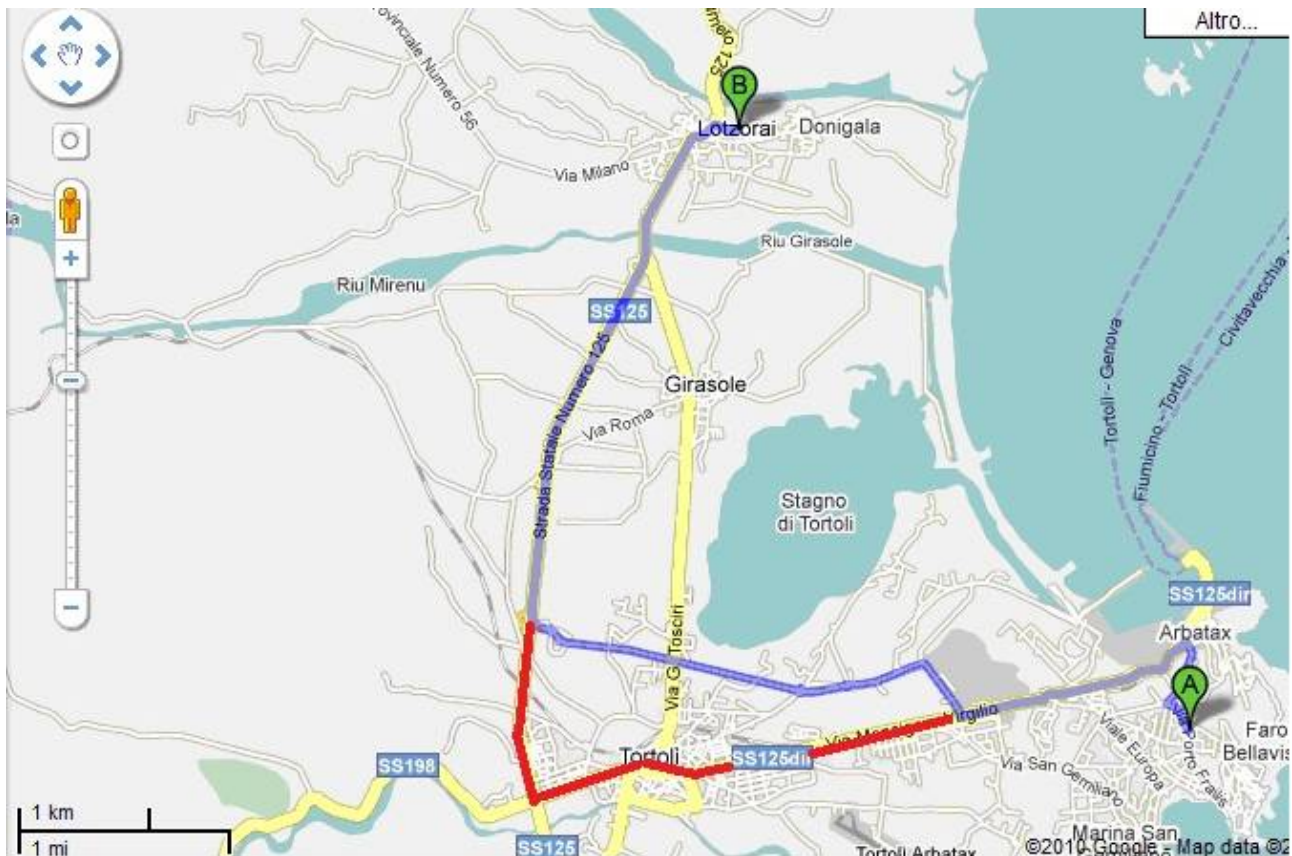
The coordinates of The Lemon House for your GPS are 39.970608, 9.665501.

To get to our flat : Casa Bougainvillea Bianca

Address: Flat 11, Via Porto Frailis 40B, Arbatax (NU) 08041, Sardegna

The easiest way to find and which takes you through the middle of Tortolì (good for getting your bearings) **RED LINE MAP BELOW** is to take the SS 125 south and take the second exit for Tortolì (signed as well for Lanusei). Turn left and proceed right through the centre of Tortolì onto via Monsignor Virgilio until you reach the Hotel Cantonera on your right and immediately you see level crossing signs and the main road goes left across the railway but you should go straight ahead, signed for Porto Frailis.

The fastest way which we use but which takes you through the not-very-pretty "Zona Industriale": **BLUE LINE MAP BELOW** SS 125 towards Tortolì but follow any signs for Arbatax, and you will probably find yourself going round the back of town passing some big stores in the Zona Industriale and then reaching a level crossing where the road and the railway are parallel. Go over the railway and turn left towards Arbatax. Note there are many level crossings, so just make sure you follow signs to Arbatax and you will find yourself on the road between Tortolì and Arbatax, there is only one..... Go slowly following the railway on your left, passing the Hotel Cantonera on your right and immediately you see level crossing signs and the main road goes left across the railway but you should go straight ahead, signed for Porto Frailis.



(Note that the route Google shows is slightly different to the one we describe below.)

Follow the signs for Porto Frailis. Drive right down to the sea and when you get there, you should see the Hotel Bitta on one side of the small bay. Go left up via Foscolo which gets very steep, and at the top of the hill, where there is a parking place with some graffiti on the wall behind it, turn left again. You are now in via Porto Frailis and very close. Go only about 40m and turn first left at a small road beside a restaurant, Sabori Antigu, **that is closed**. The gate to the apartment block is on the right, ours is the second entrance, just before the road is closed by a red-and-white barrier. Check by looking for my name on one of the bells. Once inside the flat, you should find the controller for the gate so you can open the big gate and drive your car under the carport opposite you where there is an '11' on the wall. This is your space. If there is a car in it, park behind it and if they do not move in the first 24 hours, leave a note saying 'Per piacere, questo non è il suo posto parcheggio'.

The coordinates of the flat for your GPS are 39.927762° 9.705604°

Beside the big gate, there is a little gate which you can open by putting your hand round behind the back of the wall with the bells on. Inside the courtyard, go up the big staircase on the right. The flat is the one facing you – check again for our names beside the door. There is only one lock, you may need to turn the key twice.

Finding the cellar

We also own a cellar in the block. Go **DOWN** the stairs under the main stairs and immediately turn right. Follow the corridor round left till you can go no further, the door on your left is our cellar. Use the second key for this door.