

## Getting to the Lotzorai and Arbatax area

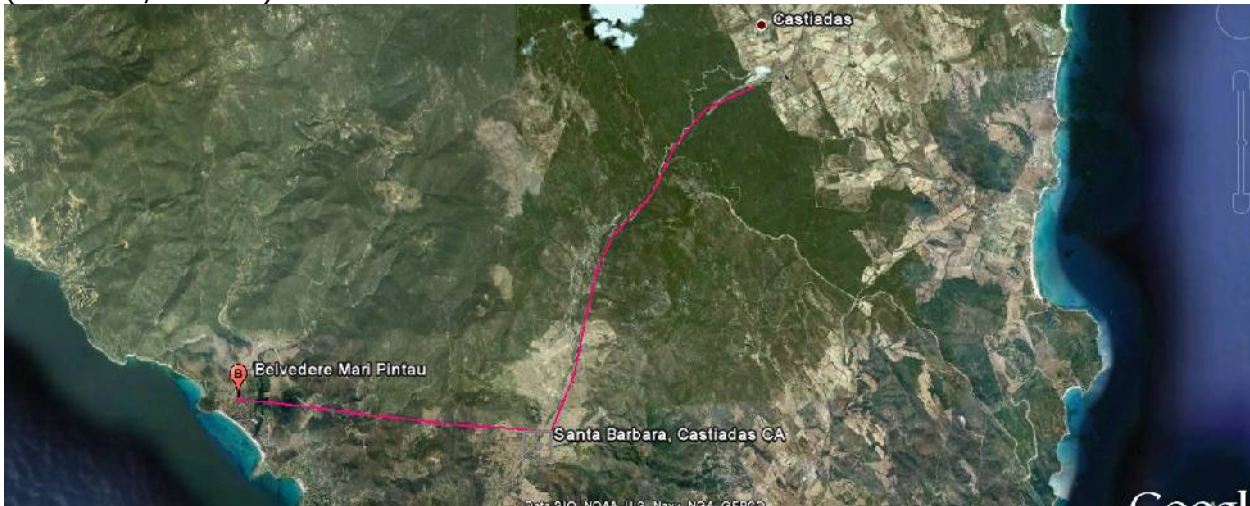
If necessary, phone Anne +39 0782 669507 or mobile +39 339 714 6496 or Peter +39 335 648 9826

Driving in Italy. Note you should have on the headlights even in daytime on the SS roads. You must carry a 'documento' (passport or driving license with photo) at all times.

Note also that road signs can be misleading. A left arrow on the RIGHT side of the road often means go straight ahead (not always, but usually). A left arrow on the left side of the road means turn left.

### Arrival From Cagliari

From the airport, follow the first sign to Cagliari then round the ring road (SS554) to leave Cagliari on the SS125 towards Muravera and Villasimius. At the 16K sign on the SS125 (after only about 7K from the ring road), you will come to a roundabout where in June 2008 they were building a flyover. Turn right at the roundabout then first left (unsigned road) which will take you along the coast road as far as Mari Pintau, just after Cala Regina. In May 2010 another section of the new SS125 was opened which from here takes you to Santa Barbara (Castiadas/Solanas).



Just head north on the SS125. After Muravera, the road has sections of new and sections of old road but it is all the SS125. **Just follow signs for Tortolì.**

### Arrival from Olbia

Fastest: Leave Olbia on the main road which is signed to Sassari when you first leave the airport then to Cagliari and Nuoro – '4 corsie' or dual carriageway, the SS131 dir. Go as far as Nuoro (90k) and stay on the road towards Cagliari until you see a sign for Lanusei Lotzorai and Tortolì, the SS389. Follow the signs for Arbatax/Lanusei through the Gennargentu mountains on the SS 389. Follow this straight, fast road southeast to pass Villanova Strisaili. At this point, SLOW DOWN and then when you see the Esso garage on the Right as the road starts to go slightly uphill, turn L following signs for VILLAGRANDE. The road climbs up and then descends (windy) through woods to Villagrande, on N edge of Villagrande you'll see the plain of Ogliastra below you and follow signs on the windy road for Tortolì. Now follow instructions below for Via Dante. About 2 hours

Most beautiful but much slower: Leave Olbia on the SS125 (right at the end of the airport access road) to San Teodoro and just drive the whole way down the coast on the same road (140k). This takes an extra 1-2 hours but it is a beautiful drive. Once through Baunei, stop at the garage on the left and look over the entire area of Ogliastra. Truly fantastic sight. Continue down to the valley floor towards Tortolì and you will come into Lotzorai before you get there.

## **Arrival from Alghero**

From Alghero airport follow signs East for Sassari – N291, after the first 10km or so it's a dual carriageway. 25km or so from Alghero airport turn R (south) on SS131 following signs for Cagliari and Macomer. Go S for 70km to Macomer; at this point you see signs for Nuoro and turn L (east) towards Nuoro, SS129. After 35km on SS129 you join SS 131 DCN (follow the sign for Nuoro e SUPERSTRADA) and continue NORTHEAST, away from Cagliari, for only 10km to arrive on the outskirts of Nuoro – slow down as the sign is late. Turn R on SS389 (sign for 'Nuoro ospedale' and Tortolì then Lotzorai, Lanusei, Arbatax and/or Mamoiada). Follow this straight, fast road southeast to pass Villanova Strisaili, SLOW DOWN and then when you see the Esso garage on the Right as the road starts to go slightly uphill, turn L following signs for VILLAGRANDE. The road climbs up and then descends (windy) through woods to Villagrande, on N edge of Villagrande you'll see the plain of Ogliastra below you and follow signs on the windy road for Tortolì.

## **Arrival from Isili, Arbus**

DO NOT follow your car's GPS or Googlemaps indications along the SS198 through Seui and Ussassai or it will take 5 hours from Arbus and 3,5 from Isili. Instead go to Escalaplano, the Perdasdefogu, and follow signs to Tertenia to descend to the SS125 on the coastal plain and join it south of Tertenia. Then as for "Arrival fro Cagliari" . It takes 2,5 hours from Isili to The Lemon House.

## **To get to The Lemon House, Via Dante 19, 08040 Lotzorai**

Lotzorai is on the SS125 about 5 k north of Tortoli and our house is on the northern side of the village. Follow the instructions above and when you get to the outskirts of Tortolì, follow signs for Lotzorai or Olbia (under the main road then go up left onto it). If you are coming from Villagrande or Cagliari, you are driving northwards when you get to Lotzorai, so continue north through the village and note where the road narrows and takes an s-bend, there is a Post Office (marked yellow PT) on the right and then a junction with two roads joining from the right. One of these is via Dante but it is one-way so continue on the main road another 50m until you come to the tobacconist and the Ugo Loi Sports shop. Turn right immediately after the sports shop into via Pascoli. (If you are coming from Baunei on the SS125, once over the river and past the supermarket this is the first road sharp turn on your left as you come into the village.) Go slowly - road is very narrow and kids will run free on it. After about 20m, you should be able to see the side of our house which is at the end of this narrow road after 50m – it's the big lime green/lemony one at the end of the road. Turn sharp right into via Dante and park. Walk back to no 19.

FINDING US Search Googlemaps.it for "The Lemon House" or insert our coords  
39.970608, 9.665501  
+39° 58' 14.19", +9° 39' 55.80"  
into your GPS/satnav (WGS84).